

MSU Athletics

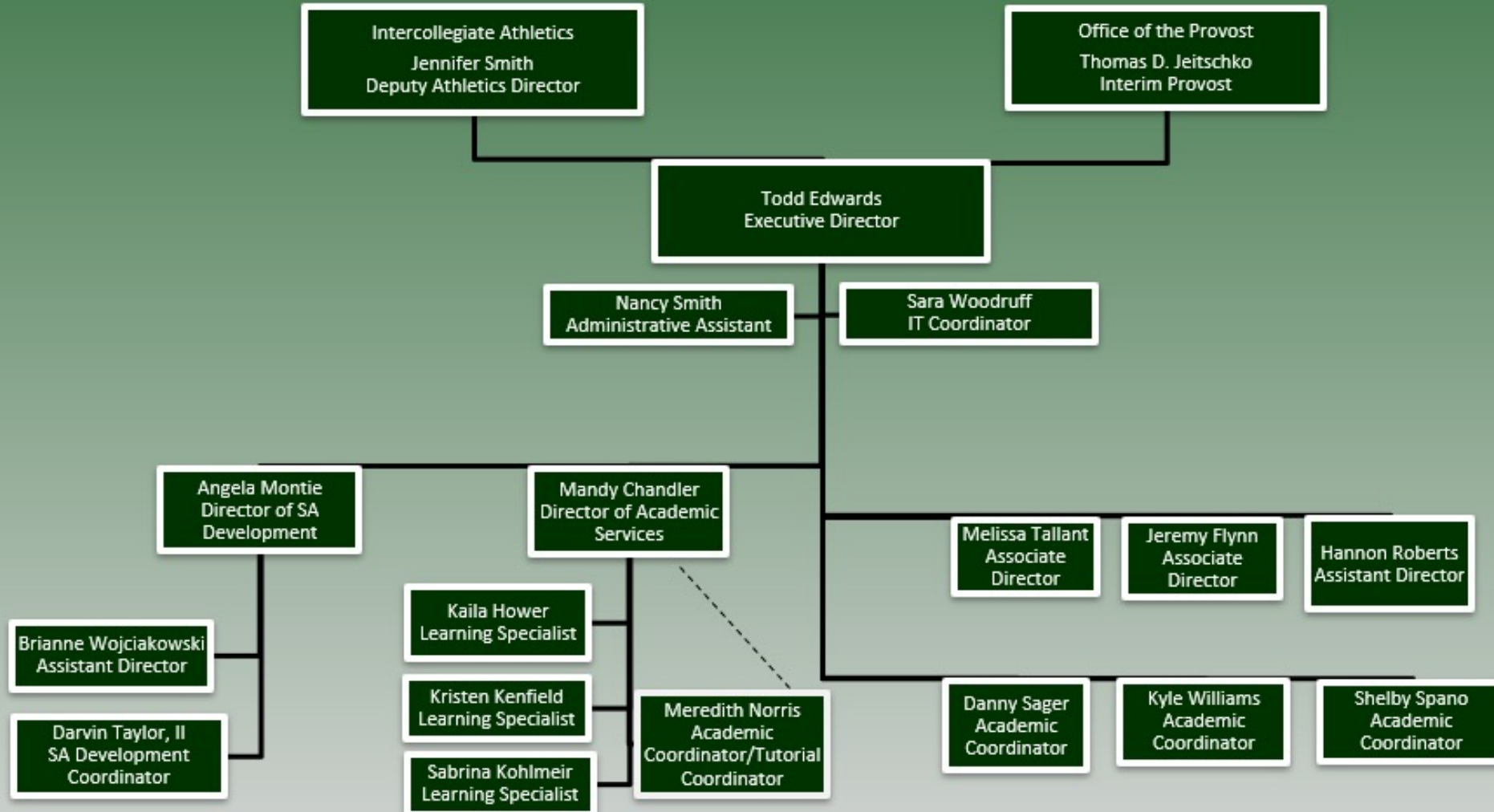
Student Athlete Support Services

Jennifer Smith, Deputy Athletic Director/Internal Operations,
Senior Women's Administrator

Ashton Henderson, Deputy Athletic Director,
Championship Resources & Culture

Todd Edwards, Executive Director
Student-Athlete Support Services

Student-Athlete Support Services



Services

- Tutorial Program
- Assistance with class scheduling
- Coordinate contact with campus
- Monitor academic progress
- Assistance with academic accommodations

Services

- Career Development/Services
- Personal Development
- Community Outreach

Issues/Challenges

- Varying Practice Times and Team Travel
 - Morning/Mid-day/Afternoon
 - In-season vs Out-of-season
- Transfer Process
 - NCAA transfer portal windows by sport
 - Significantly increased activity in some teams
 - Will have impact on future grad rates for some sports (FGR)
 - Compressed time for credit evaluation, major evaluation, admission and matriculation
 - Incoming transfers must still meet Progress Toward Degree requirements at new school
 - (40/60/80, 6-credit/18 credit, FB and Baseball rules)

Colleges and Majors

Currently 630 students in 128 majors spread across 12 colleges (+ 5 Exploratory Preference). We also have 39 in the Honors College.

Communication Arts & Sciences – 142 (including 6 grad students)

Social Sciences – 120 (including 9 grads)

Education – 113 (including 15 grads)

Business – 103 (including 7 grads)

Natural Science - 43

Agriculture & Natural Resources – 41 (including 1 grad)

Engineering – 31 (including 1 grad)

James Madison – 9

Lyman Briggs – 9

Arts & Letters – 8

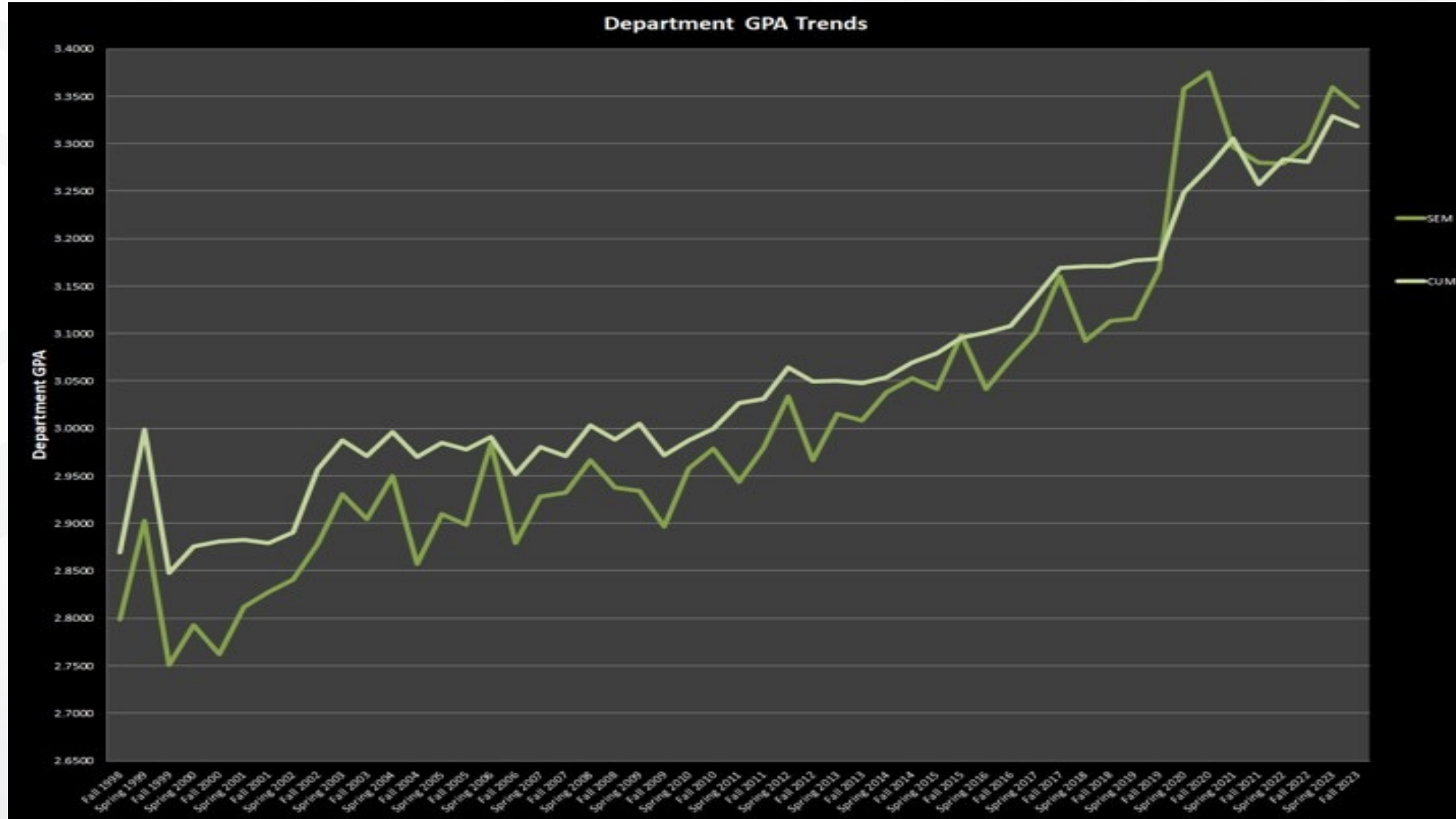
Nursing – 5

Veterinary Medicine – 1 (grad)

FS23 Academic Accomplishments

- Posted the **2nd HIGHEST ALL-TIME DEPARTMENT CUMULATIVE GPA (3.3188)**; all-time high is 3.3286 from Spring 2023 (all raw grades)
 - Marks the 26th consecutive semester over a 3.00 cumulative GPA
- Posted the **2nd HIGHEST ALL-TIME DEPARTMENT FALL SEMESTER GPA (3.3389)**; all-time high is 3.3752 from pandemic-aided Fall 2020 (raw grades)
- **20 TEAMS** registered both a **CUMULATIVE** and **SEMESTER GPA of 3.0 OR BETTER**
- **5 TEAMS POSTED THEIR HIGHEST ALL-TIME TEAM CUMULATIVE GPA following FS23: Field Hockey, Softball, Ice Hockey, Women's Track & Field, Men's Track & Field**
 - **Women's Golf (3.8557!) had their 2nd ALL-TIME HIGH FOR ANY MSU SPORT (Previous high was their 3.8658 in Spring 2023)**

CUMULATIVE GPA-3.3188

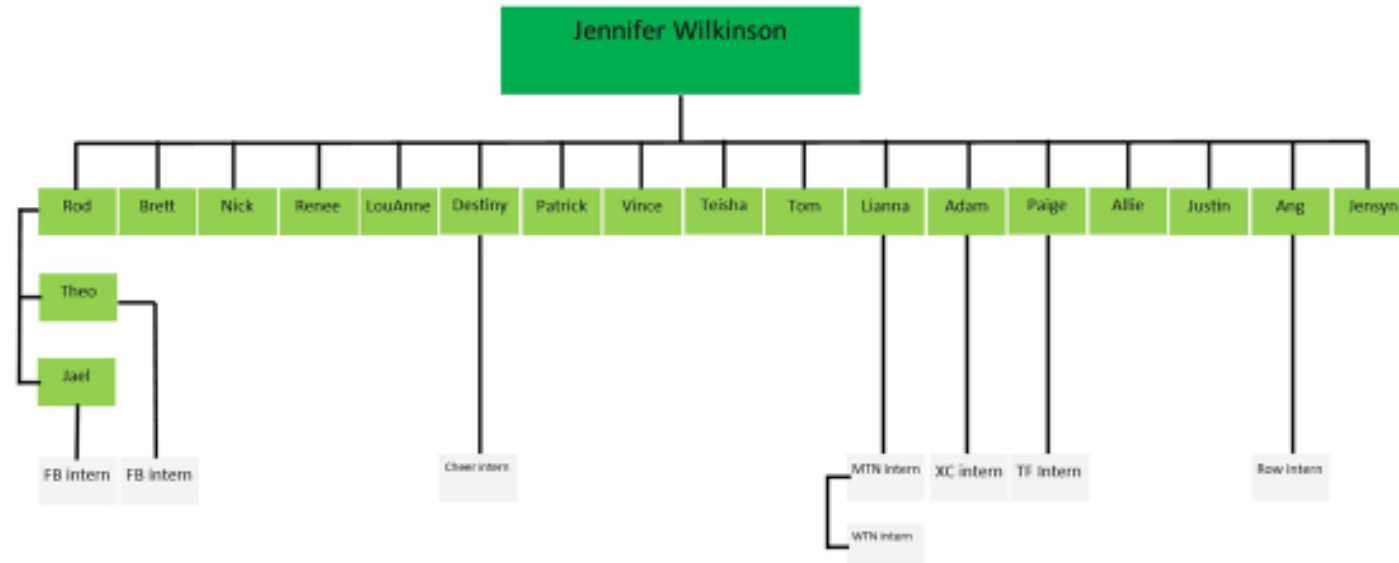


Medical Services

- Staffing
 - IN HOUSE: Athletic Trainers, Physical Therapists, Primary Care Physicians, Orthopedic Surgeons, Physician's Assistant
 - Relationships with specialty care providers within the community for expedited care
- Comprehensive Model
 - Preventative Healthcare
 - Annual Physical Examinations, Laboratory Testing, Influenza Immunizations, Baseline Orthopedic and Performance Testing, Baseline Concussion Testing, Postural X-ray
 - Medical Services
 - Available on site: X-ray, Pharmacy, Hydration Testing, Custom Orthotic Fitting, Custom Brace Fitting
 - State of the art Rehabilitation Equipment, Hydrotherapy Centers
 - Multiple specialty skill certifications by AT staff including: Dry Needling, Blood Flow Restriction Therapy, Graston Technique, Osteopathic Manual Medicine, Vestibular Therapy, Corrective Exercise Techniques

Athletic Training Services

Previous Staffing Structure

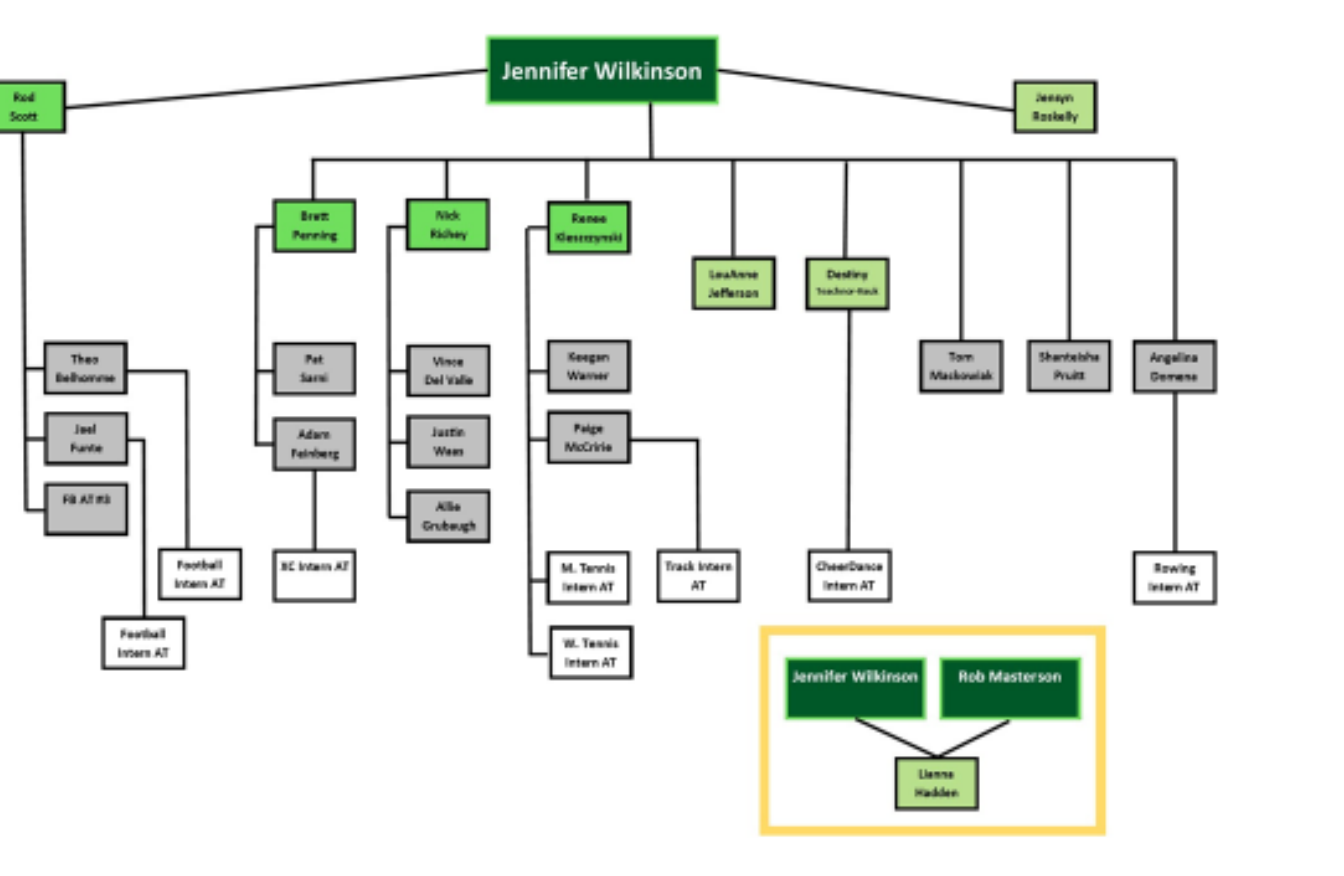


Around the Conference

- 56% of schools have 2 or more PTs
- 8% of schools have 0 PTs

**Penn State is currently searching for 2 PTs*

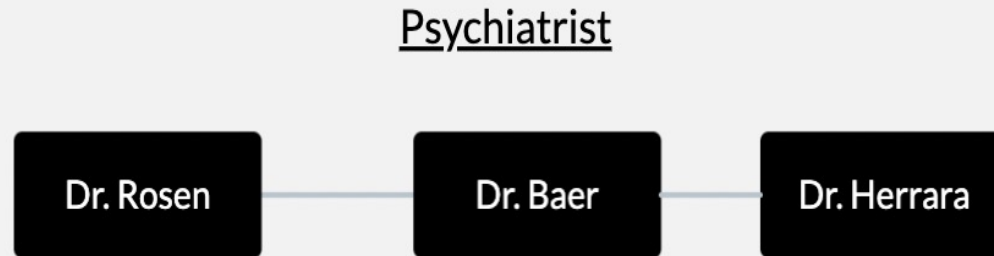
	FB	Other
Maryland	1	2
USC	1	2
Michigan	1	2
Northwestern	1	2
Ohio State	1	1
Indiana	1	1
Rutgers	1	1
UCLA	1	1
Purdue	1	1
Nebraska	1	1
Wisconsin	1	0.25
Michigan State	1	0
Oregon	1	0
Washington	1	0
Illinois	0	1
Penn State*	0	0.5
Iowa, Minnesota	0	0



ng Services

Mental Health Support Services

Previous Staffing Model



AROUND THE CONFERENCE

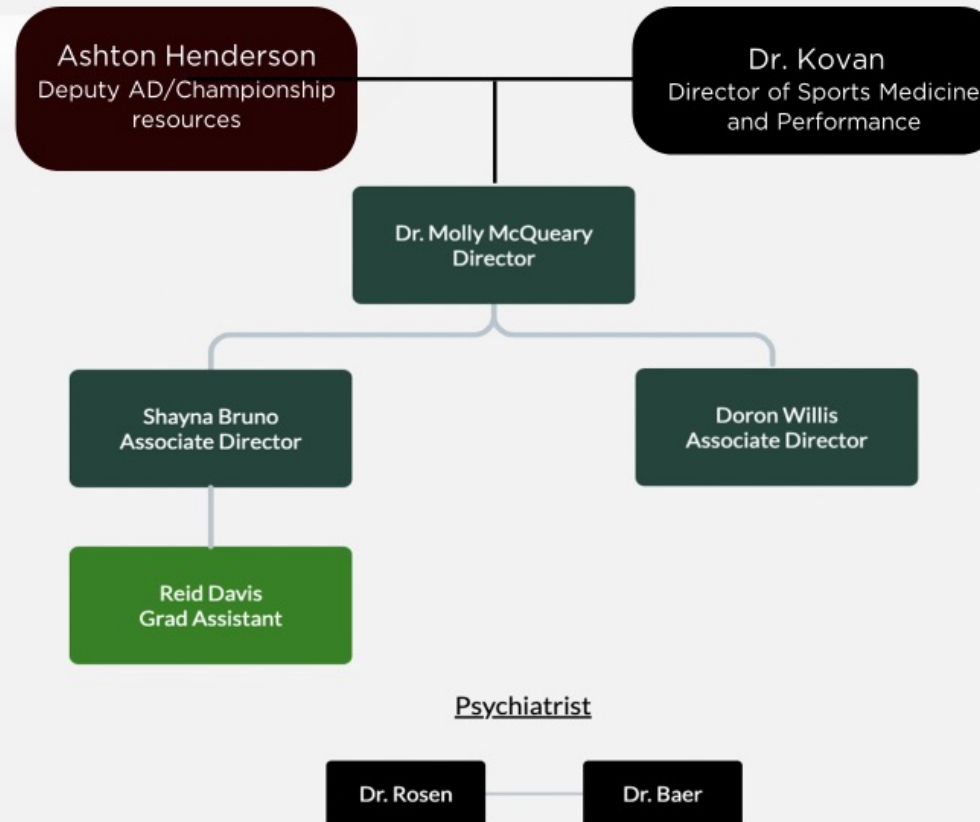
Michigan State

- Currently 3 full time staff members, 1 GA, and 2 part-time psychiatrist
- Plans to hire on another CMPC this upcoming fiscal year

Nebraska	8
Iowa	9
Rutgers	11
Wisconsin	12
Penn State	7
Northwestern	8
Ohio State	6
Indiana	3
Michigan	7
Minnesota	5
Illinois	5
Maryland	6
Purdue	2

Mental Health Support Services

Current Staffing Model



Mental Health Support Services

SERVICES

- Individualized Clinical Care & Mental Performance Coaching
- Psychiatric Referrals
- Team & Group Sessions
- Coaching Education
- Emergency/Crisis Interventions
- Collaboration with Support Staff
- Intake Assessments
- Travel mental performance coaching
- Virtual Sessions
- Substance abuse & Eating disorder care

INITIATIVES

- De-Stress Fest
- Alumni STATE of Mind
- Annual Crisis Education
- New Athletes Wellness Fair
- Community Activations
- Collaboration with Montgomery Foundation

Within our first year and a half as a unit we have serviced

455+

of student athletes on an individual basis across ALL varsity sports.

Within our first year and a half as a unit we have serviced

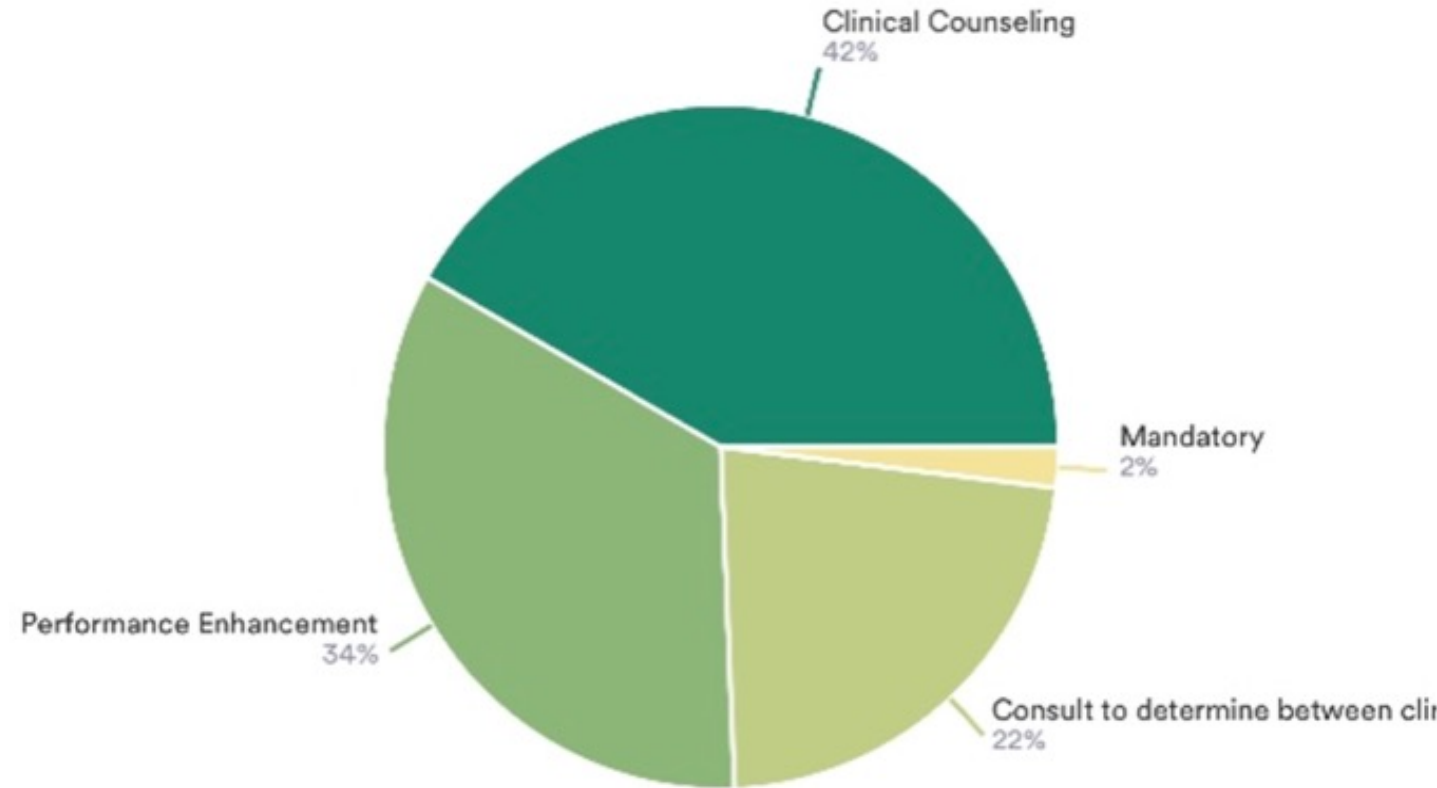
18 TEAMS

with mental performance sessions.



Mental Health Support Services

Please choose Referral Category

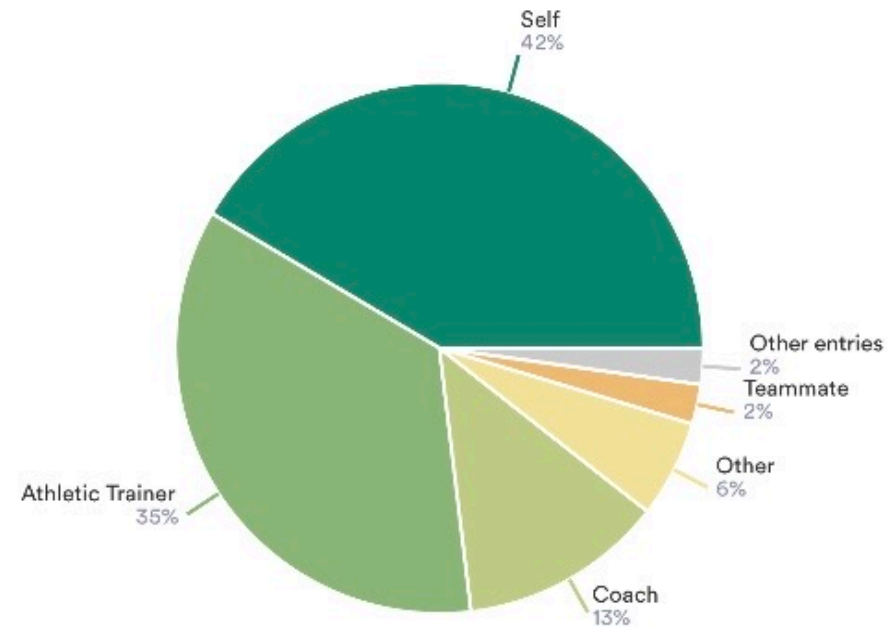


Clinical Counseling ● Performance Enhancement ● Consult to determine between clinical or performance ● Mandatory

Mental Health Support Services

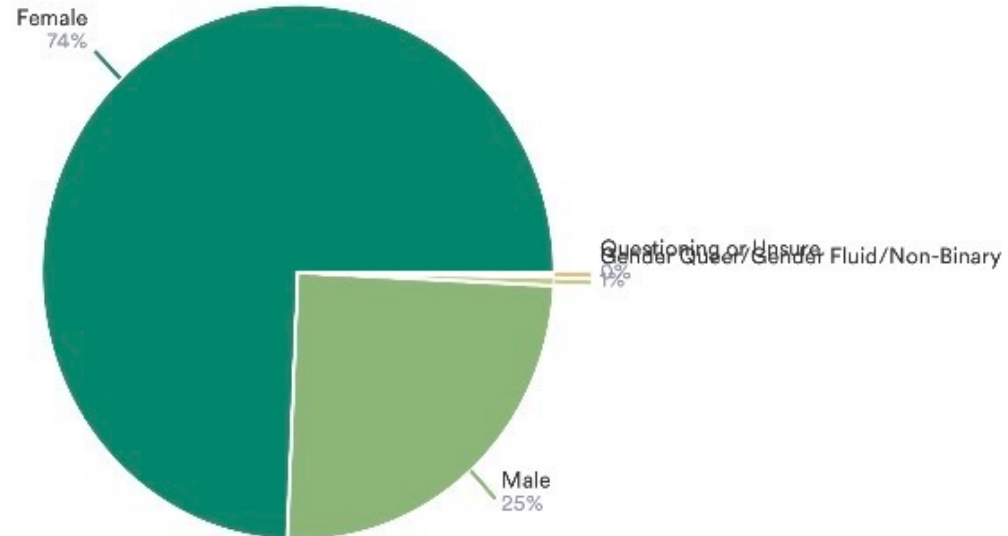
Referring Source

455 Responses



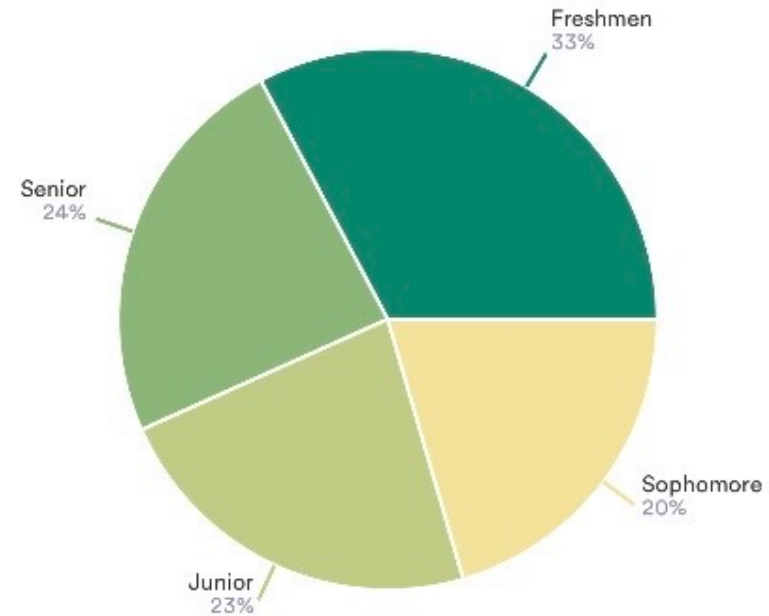
Mental Health Support Services

To which gender does the person being referred identify?



Mental Health Support Services

School Year



Mental Health: Post-Collegiate Services



SKYWOOD
— RECOVERY —

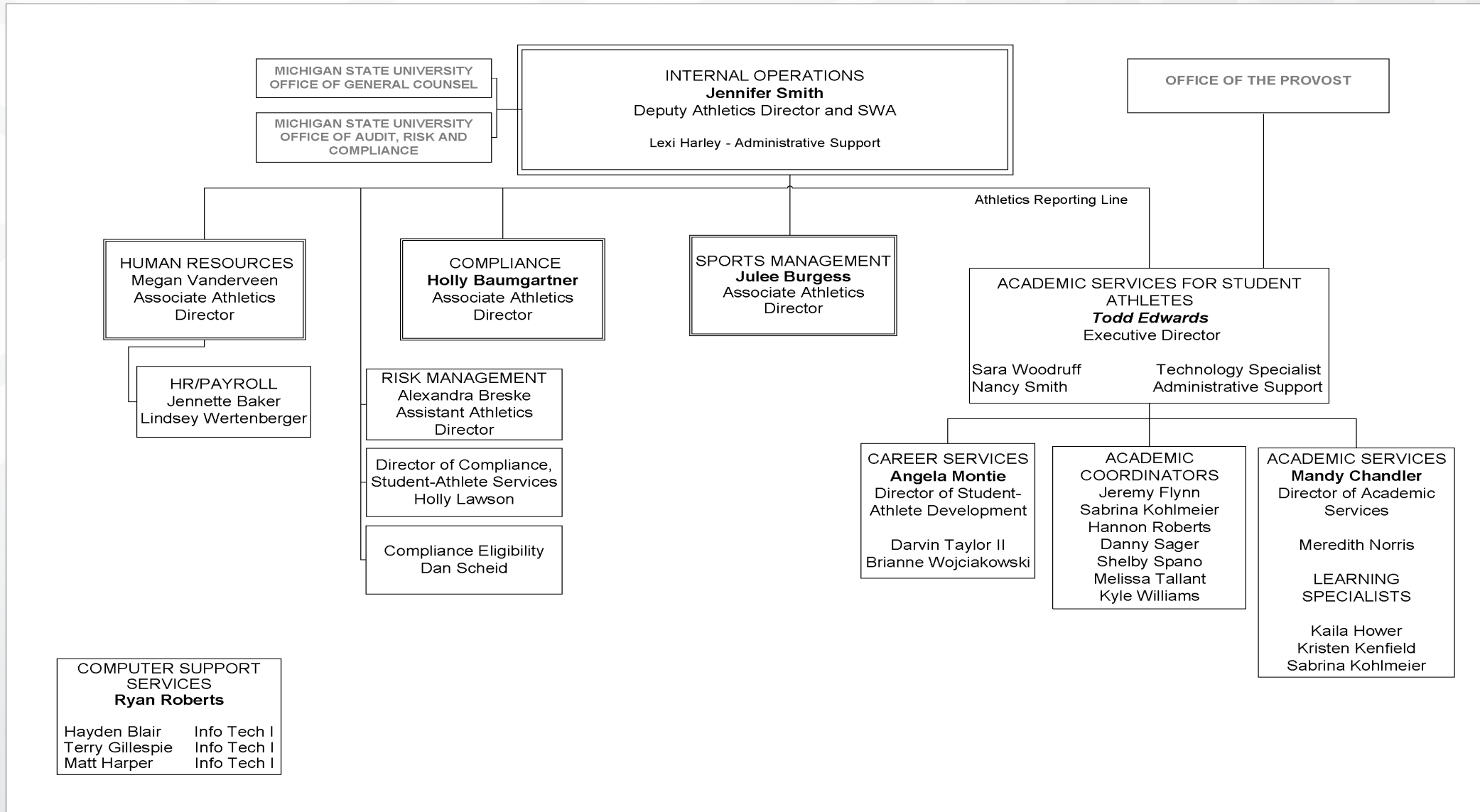
855-2SPARTY
(855-277-2789)

EMAIL: STATEOFMIND@HOPEDESK.CO

**A CRISIS LIFELINE FOR MSU LETTERWINNERS
AND THEIR FAMILIES.**
COMMITTED TO OUR STUDENT-ATHLETES FOR LIFE.



Office of Compliance Services



Office of Compliance Services

Rules Education for Student-Athletes & Staff

NCAA Legislation for Student-Athletes, Coaches and Staff

- Over 140 meetings annually

Interpretations of NCAA and Big Ten legislation/Consultation with Big Ten and NCAA

Reporting of Violations and NCAA Violations

Oversight of Transfers, Transfer Portal, Eligibility, Roster Management and Athletic Financial Aid

Responsible for Big Ten Institutional Standards

Audited yearly by MSU Internal Audit